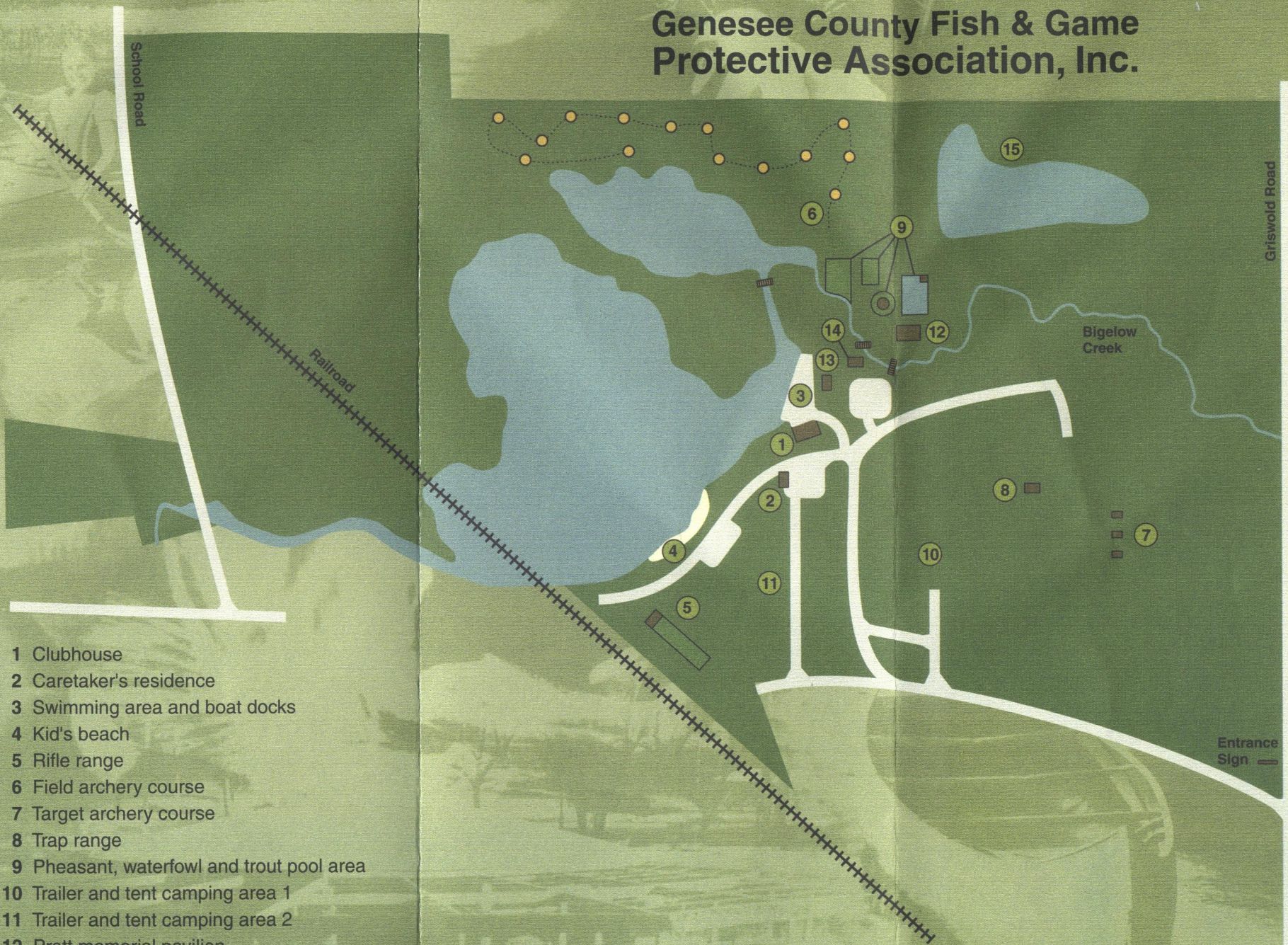


# Genesee County Fish & Game Protective Association, Inc.



- 1 Clubhouse
- 2 Caretaker's residence
- 3 Swimming area and boat docks
- 4 Kid's beach
- 5 Rifle range
- 6 Field archery course
- 7 Target archery course
- 8 Trap range
- 9 Pheasant, waterfowl and trout pool area
- 10 Trailer and tent camping area 1
- 11 Trailer and tent camping area 2
- 12 Pratt memorial pavilion
- 13 Ruckle memorial shelter
- 14 Vukman memorial shelter
- 15 Trout fishing pond

Entrance Sign